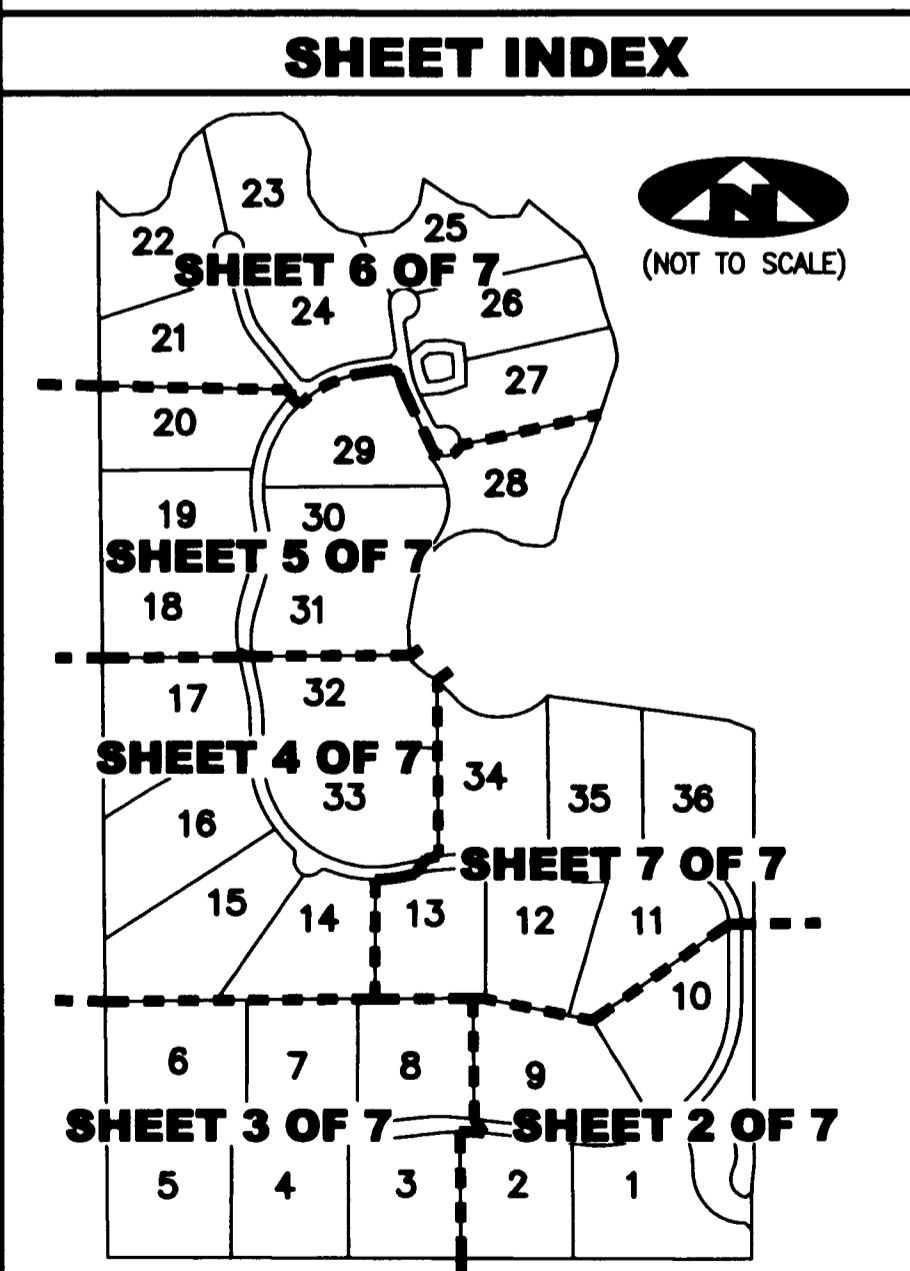
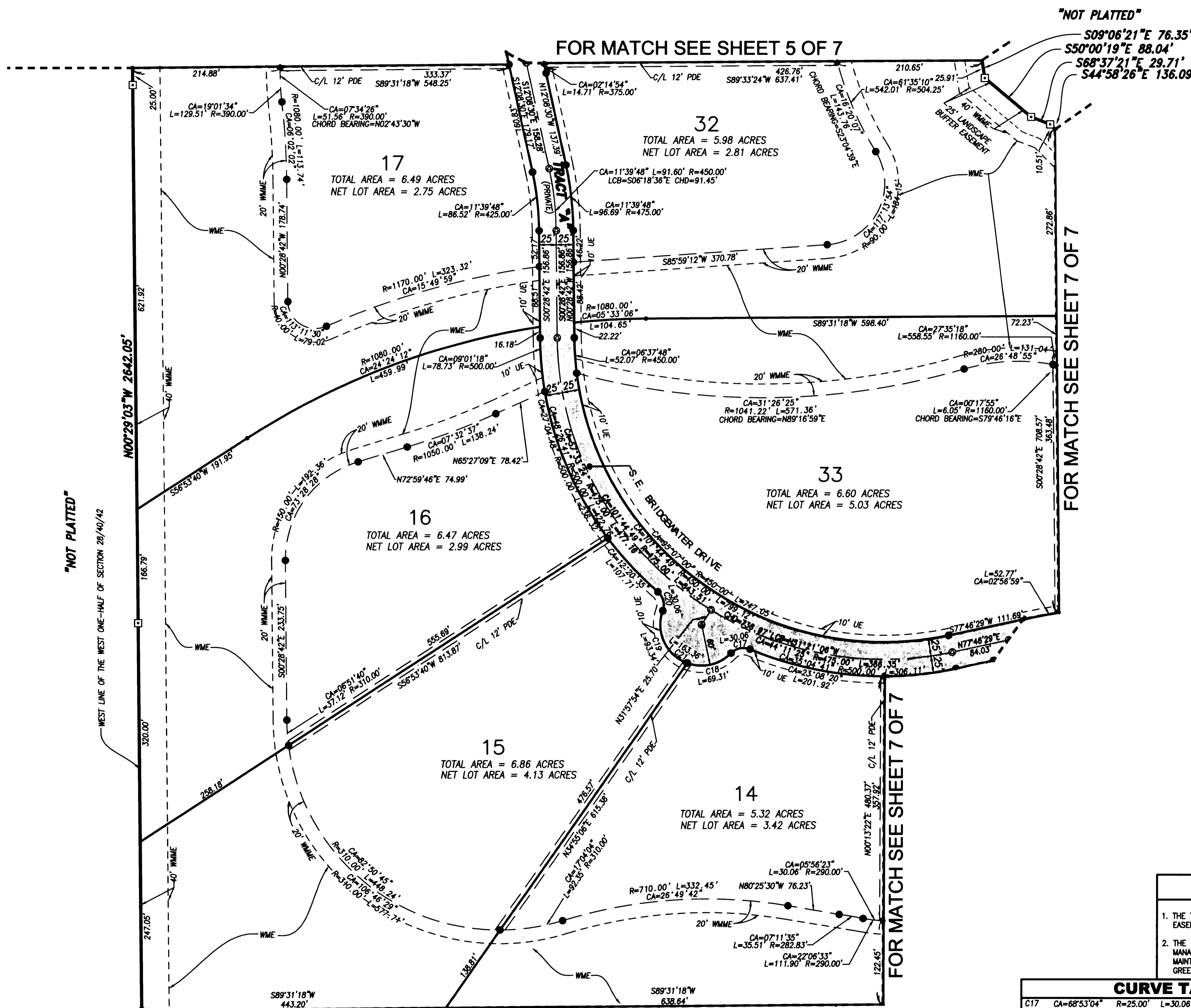
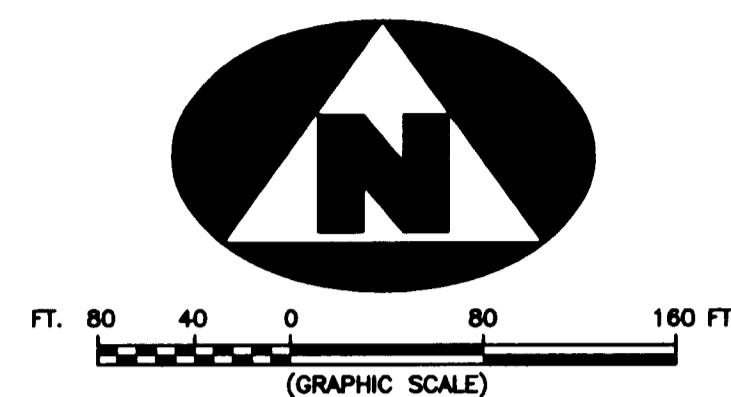


LYING IN THE WEST ONE-HALF OF SECTION 28, TOWNSHIP 40 SOUTH, RANGE 42 EAST, MARTIN COUNTY, FLORIDA



■ DENOTES LIMITS OF ACCESS EASEMENT FROM BRIDGEWATER TO COMMUNITIES PROPERTY (ORB 2136, PAGE 1879)

LEGEND table with symbols for radial lines, centerlines, easements, and control points.

SFWMD table listing symbols for permanent monuments, control points, and easements.

SURVEYOR'S NOTES: 1. THE BASE BEARING... 2. IN THOSE INSTANCES... 3. PLATTED POSITION... 4. THIS INSTRUMENT...

ASSOCIATED LAND SURVEYORS, INC. logo and contact information: 4152 W. BLUE HERON BOULEVARD—SUITE 121, RIVIERA BEACH, FLORIDA 33404.

SURVEYOR'S NOTE: 1. THE TOTAL LOT AREA INCLUDES ALL EASEMENTS SHOWN ON THE LOT. 2. THE NET LOT AREA EXCLUDES THE WATER MANAGEMENT, WATER MANAGEMENT MAINTENANCE EASEMENTS, AND WILDLIFE/GREENWAY CORRIDOR.

CURVE TABLE with columns for curve ID, CA, R, L, LCB, and CHD for curves C17 through C21.

FILE: P271\_PLOT, FB: WO.NO.: P271, SCALE: 1"=80', DATE: 8/10/2004, DWN: KVC, SHEET 4 OF 7